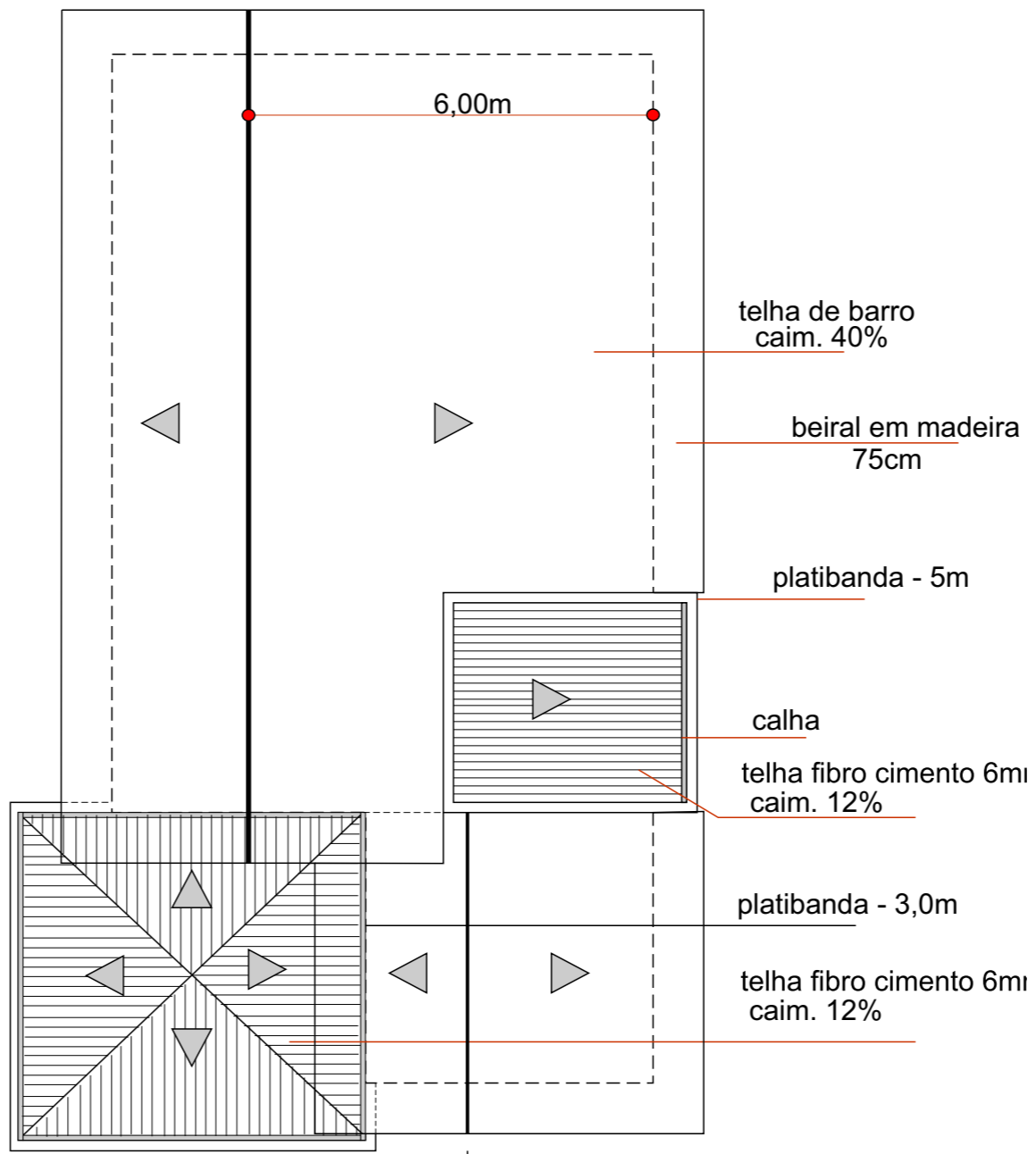


**Planta Baixa - técnica**



**Planta de cobertura**

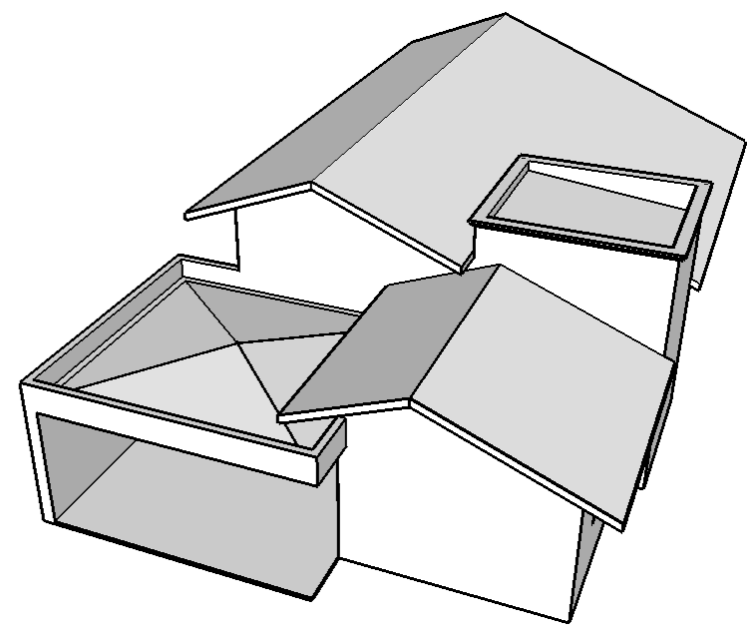
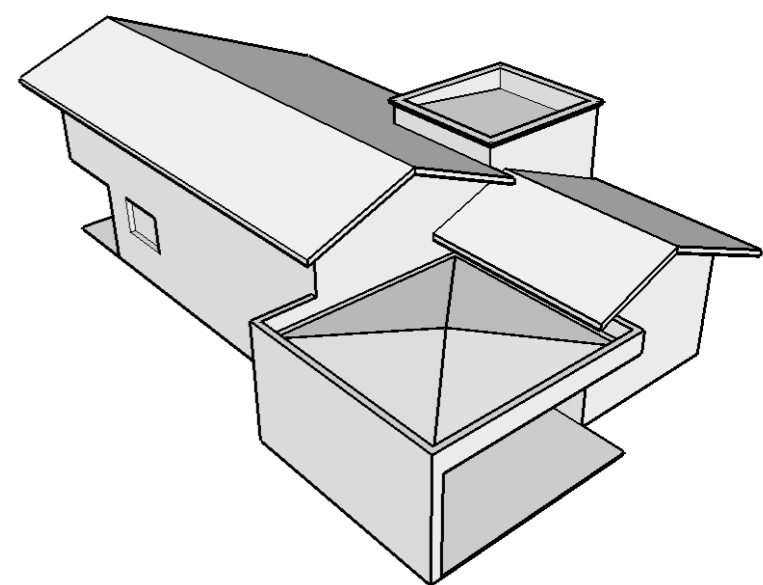
**Legenda de Portas**

- P1 0.80 x 2.10 abrir - ferro/vidro
- P2 0.80 x 2.10 abrir - ferro
- P3 0.90 x 2.10 correr - ferro / vidro

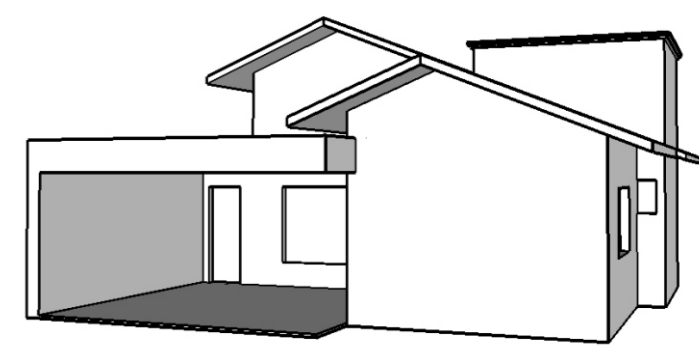
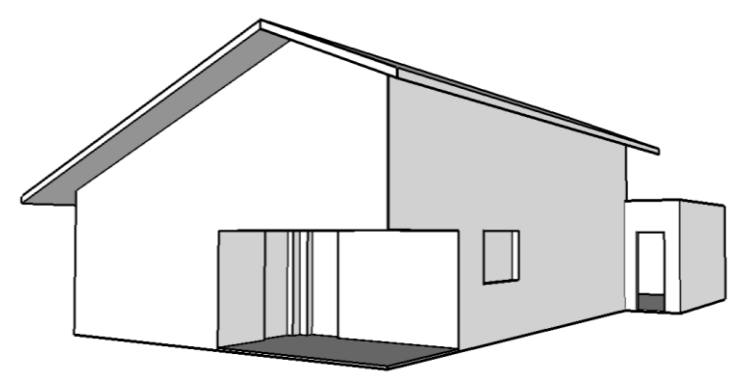
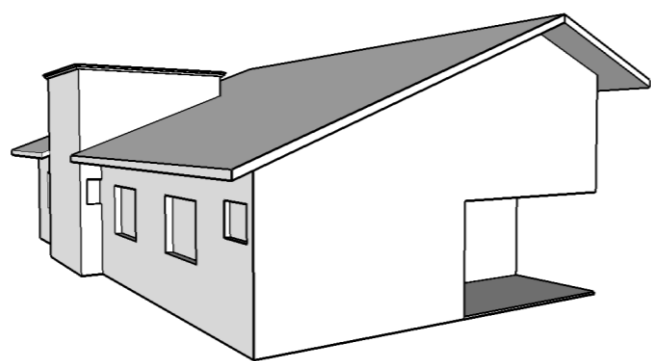
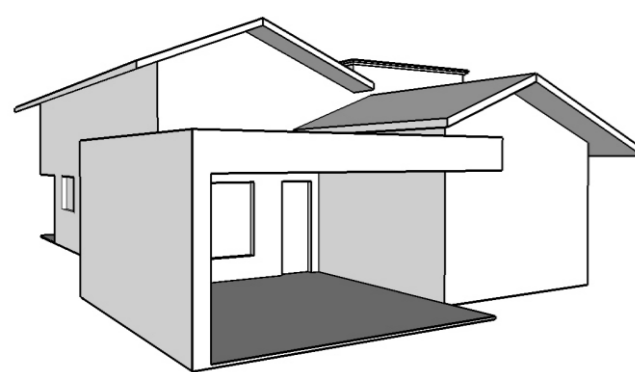
**Legenda de Janelas**

- J1 1.50 x 1.00 x 1.10 correr - veneziana
- J2 1.50 x 1.00 x 1.10 correr - ferro/vidro
- J3 0.35 x 0.60 x 1.70 basculante - ferro/vidro
- J4 0.80 x 0.60 x 1.70 basculante - ferro/vidro

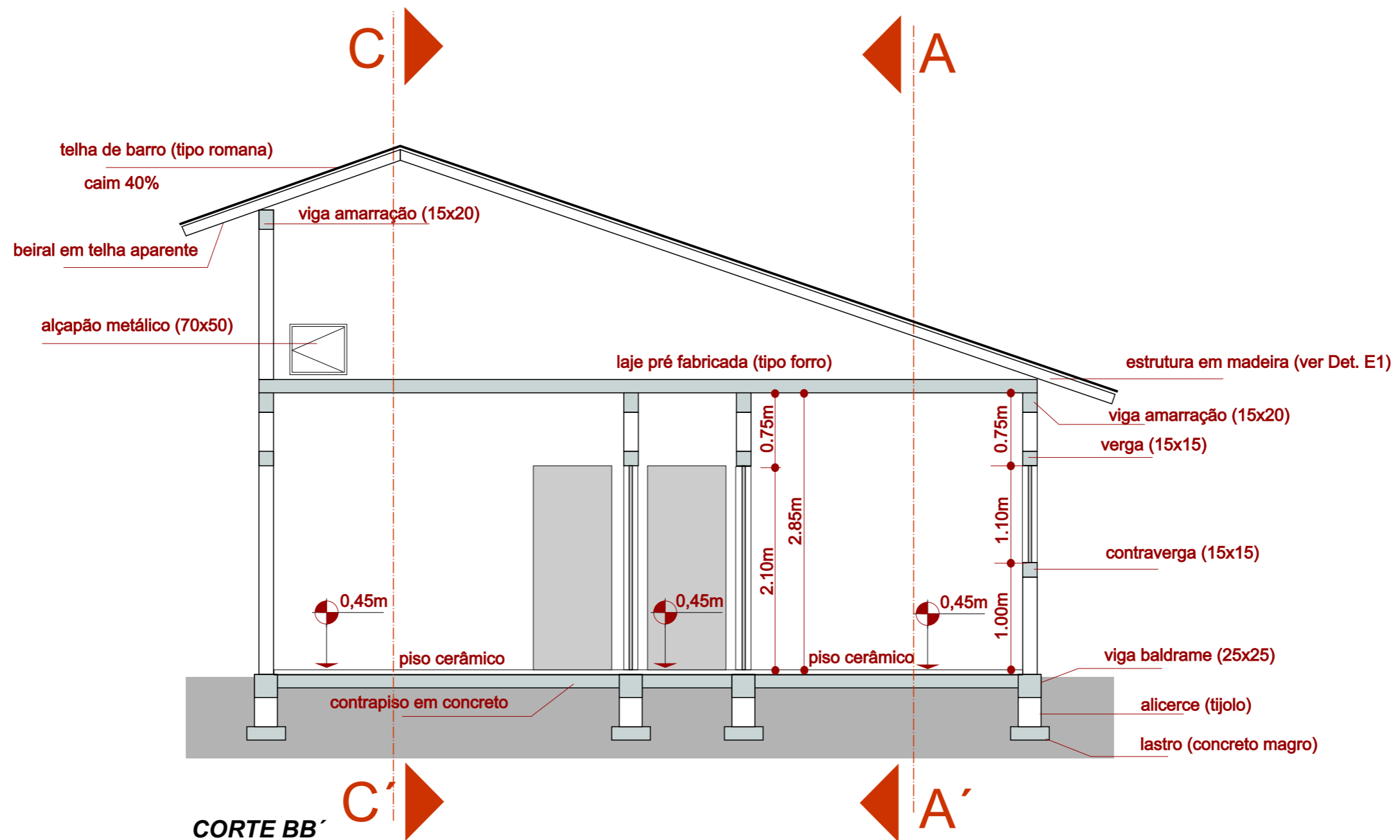
- telha de barro caim. 40%
- beiral em madeira 75cm
- platibanda - 5m
- calha
- telha fibro cimento 6m caim. 12%
- platibanda - 3,0m
- telha fibro cimento 6m caim. 12%



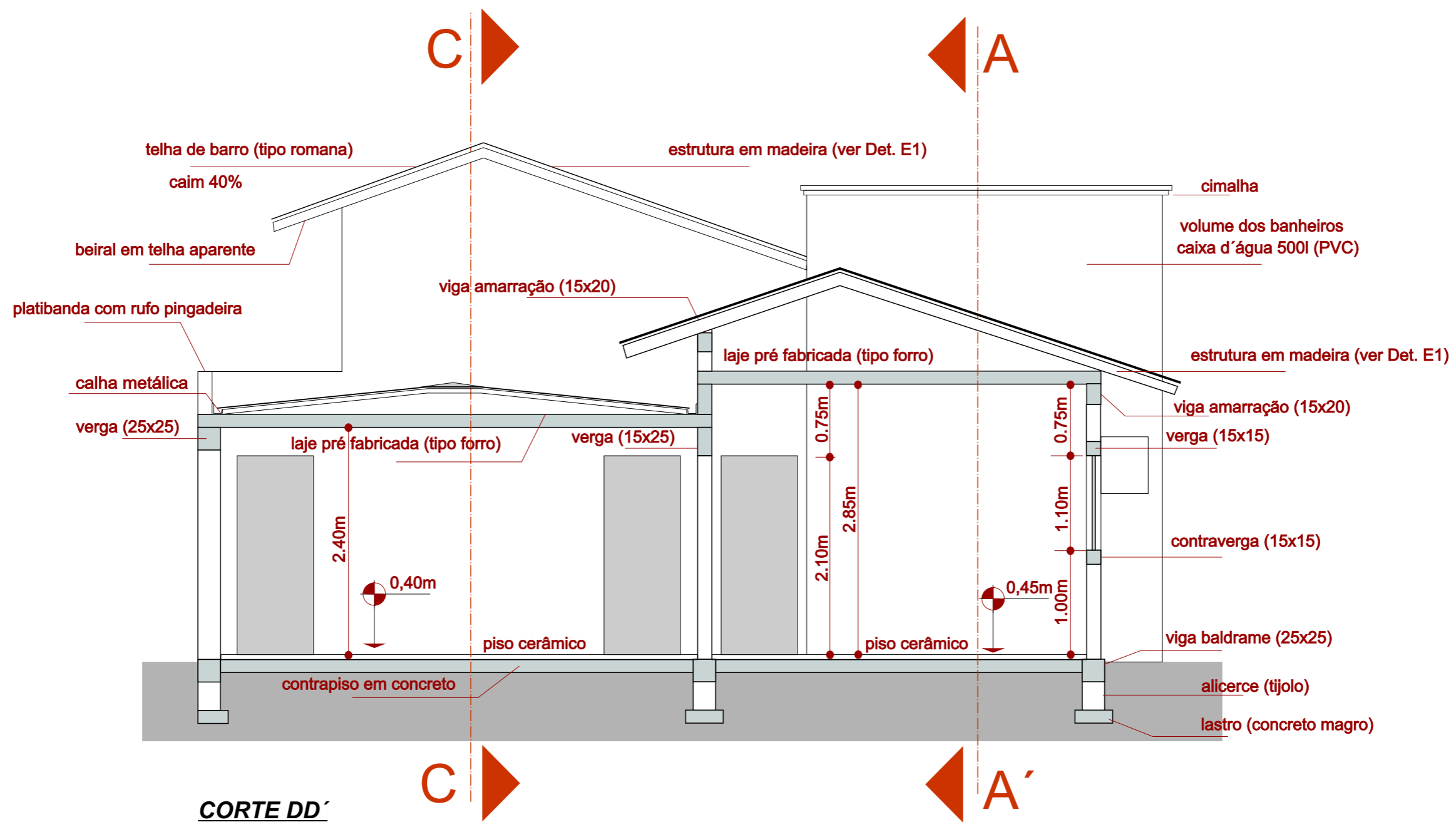
**Exercício B**







**CORTE BB'**  
 Escala 1:50



**CORTE DD'**  
 Escala 1:50

