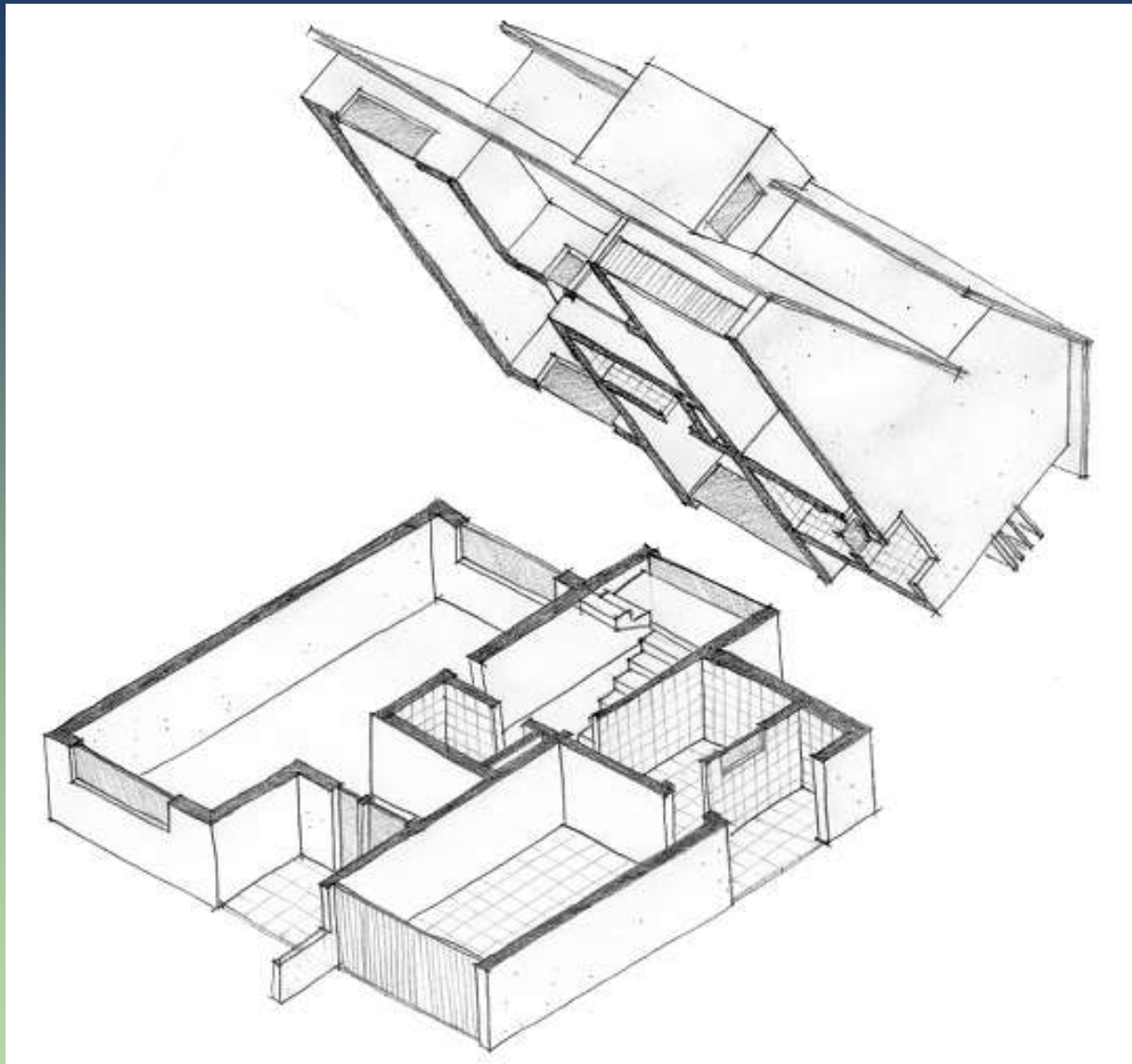


Planta Baixa



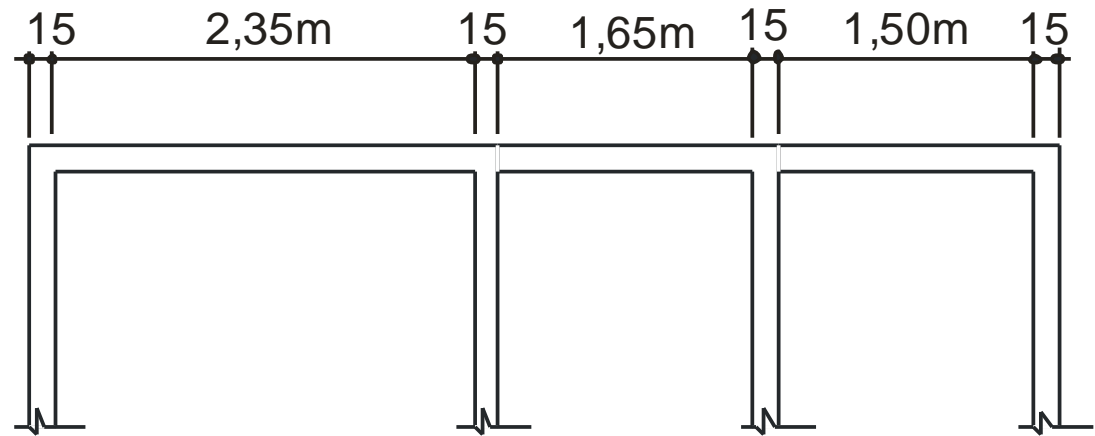
Aula 03

Desenho Arquitetônico

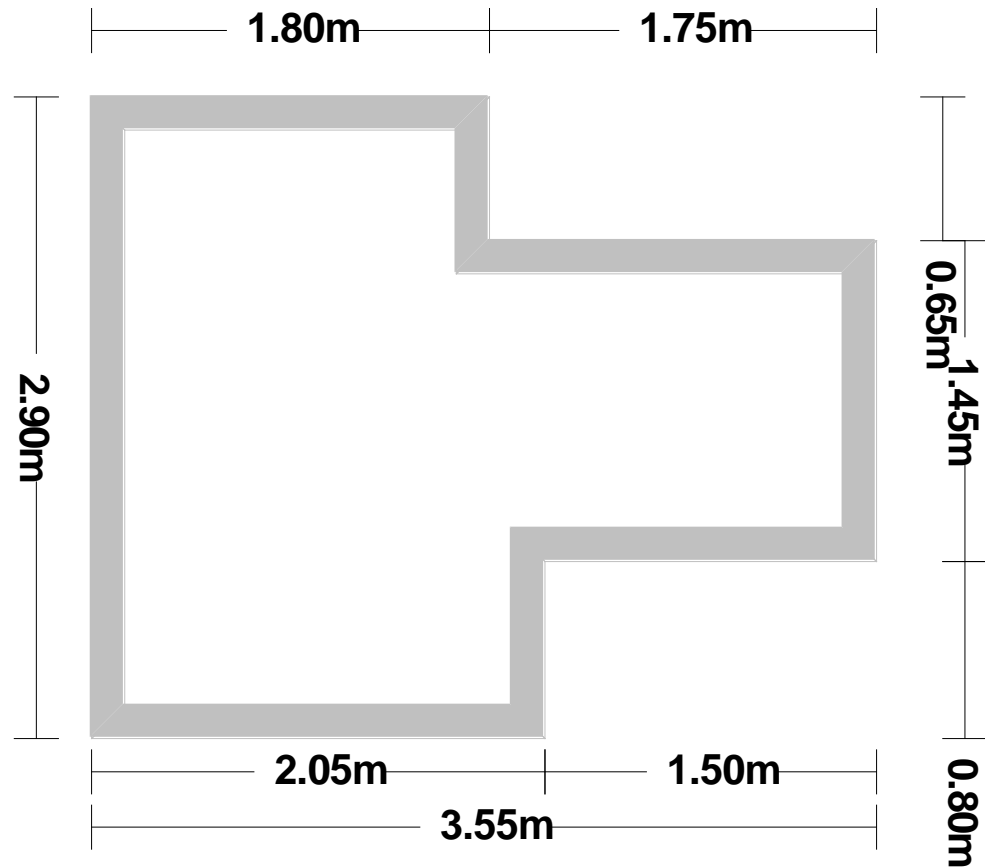


Planta baixa - Técnica

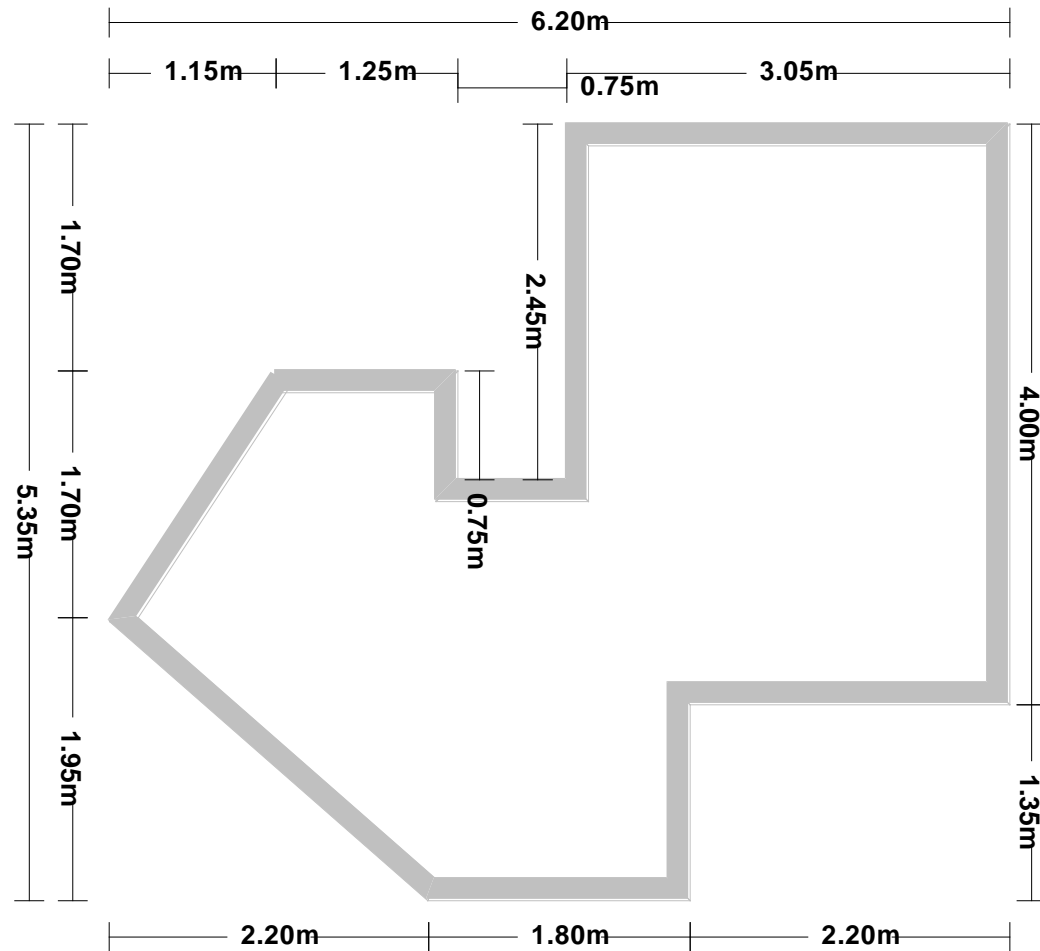
Indicação de cotas



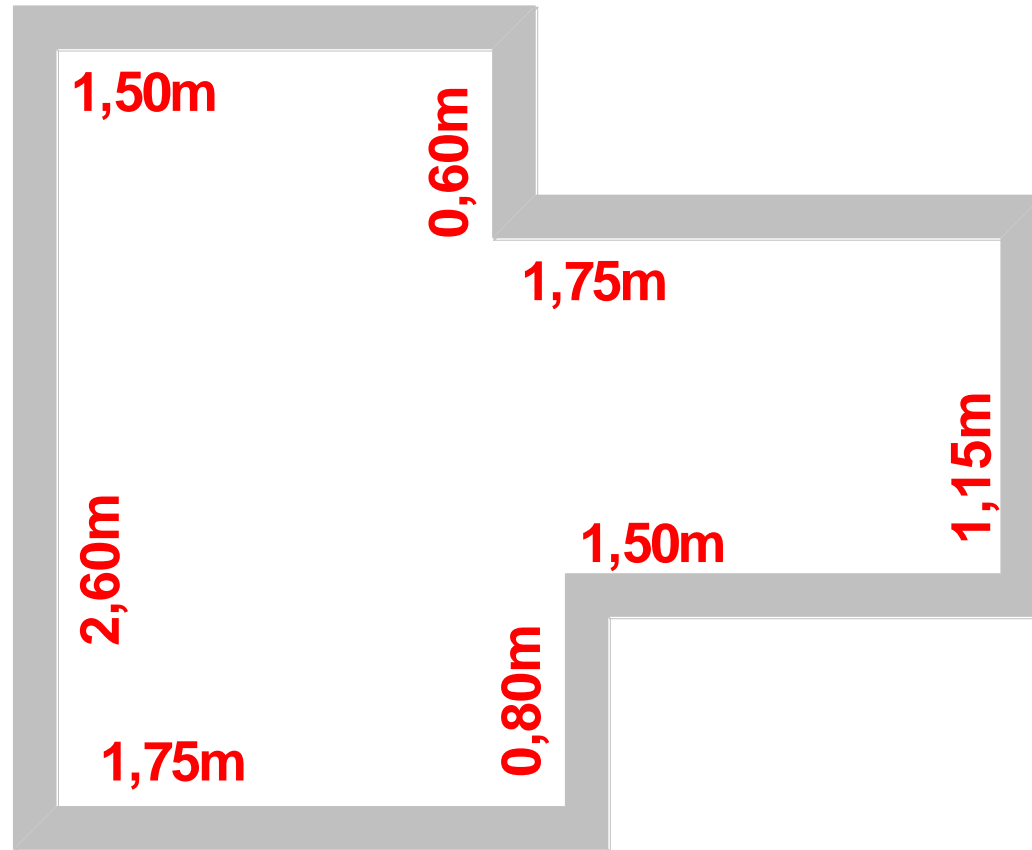
Planta baixa - Técnica



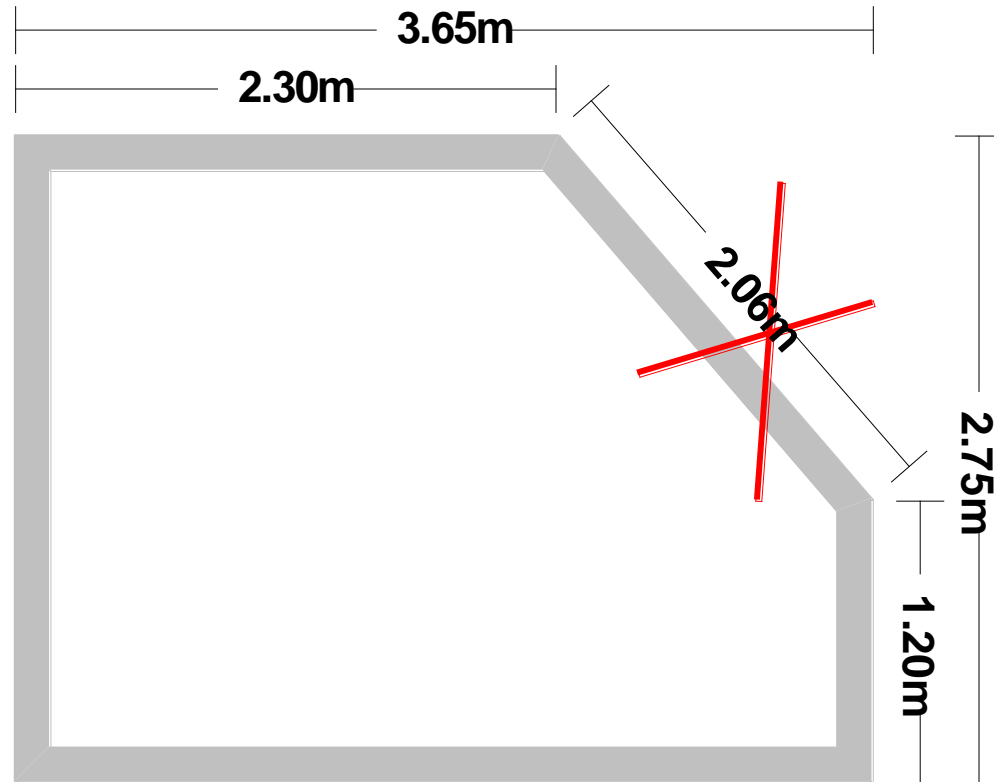
Planta baixa - Técnica



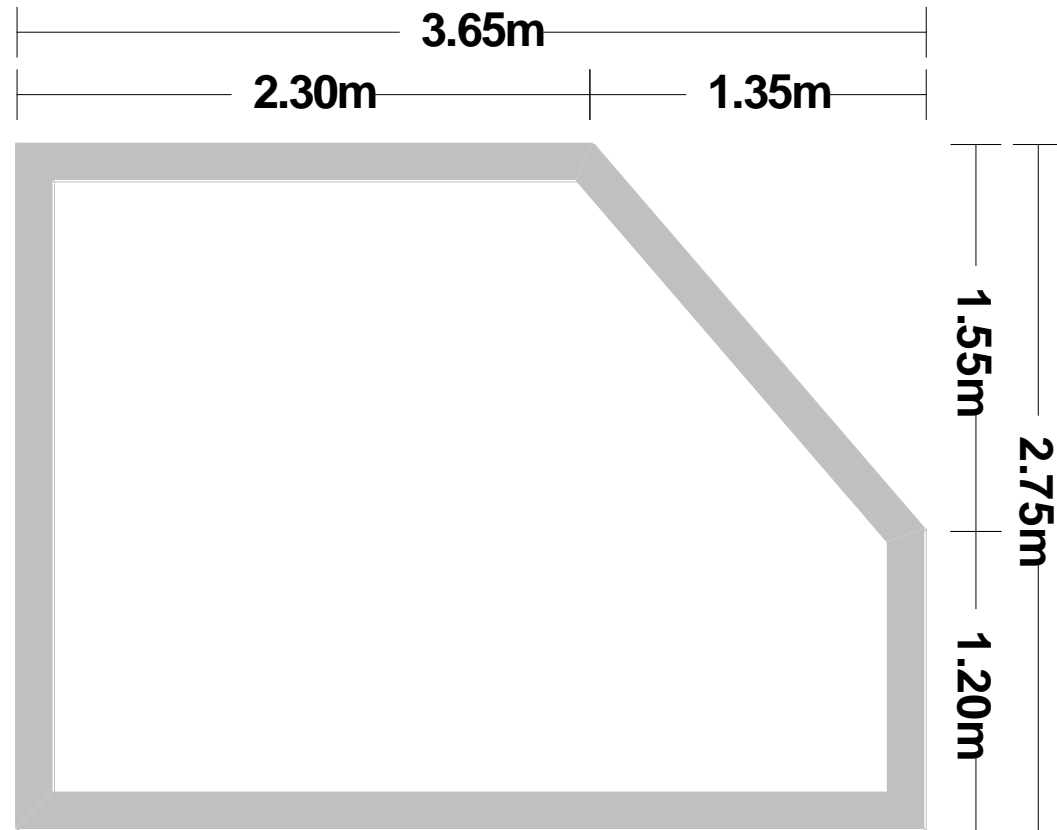
Planta baixa - Técnica



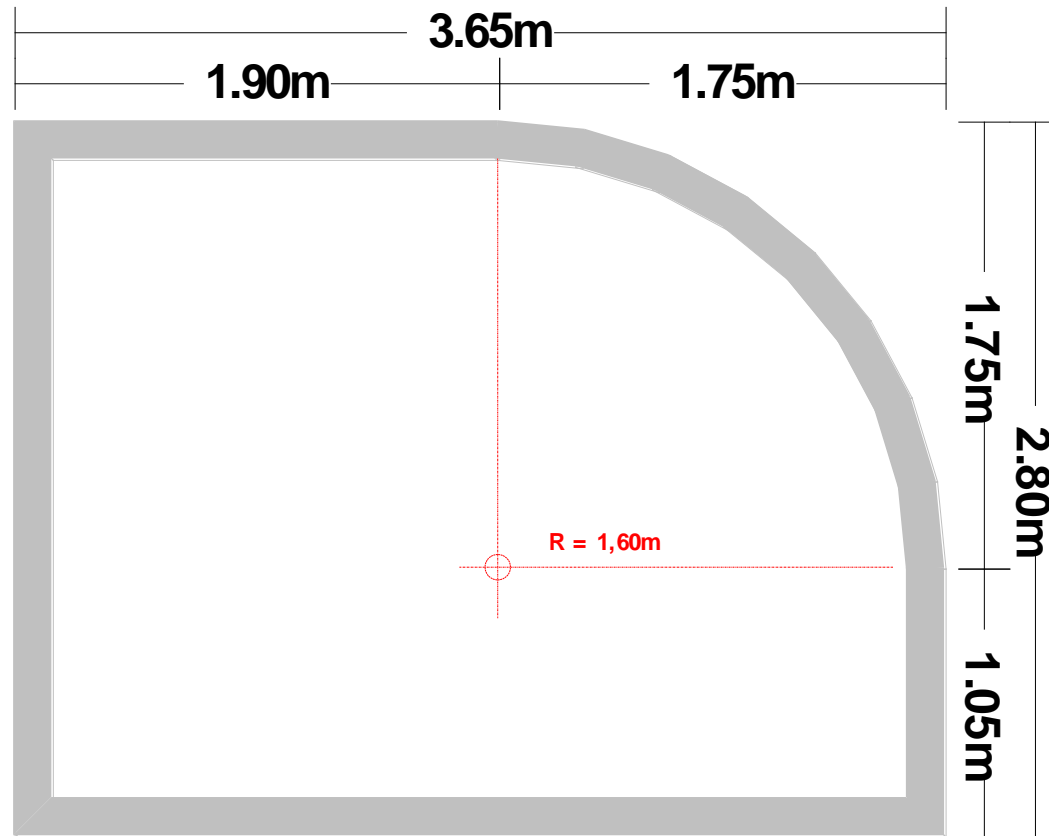
Planta baixa - Técnica



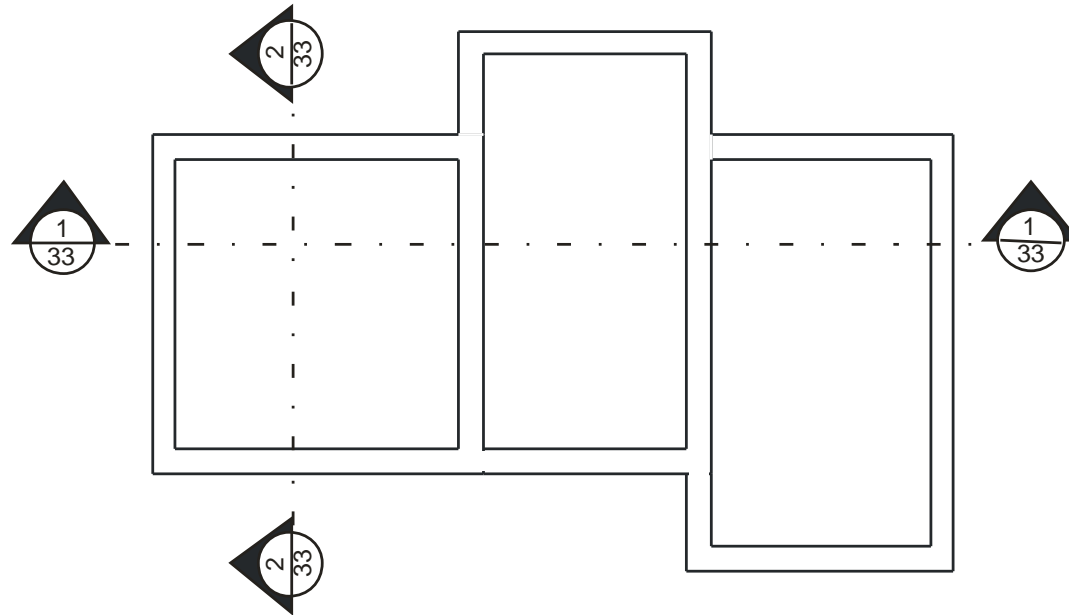
Planta baixa - Técnica



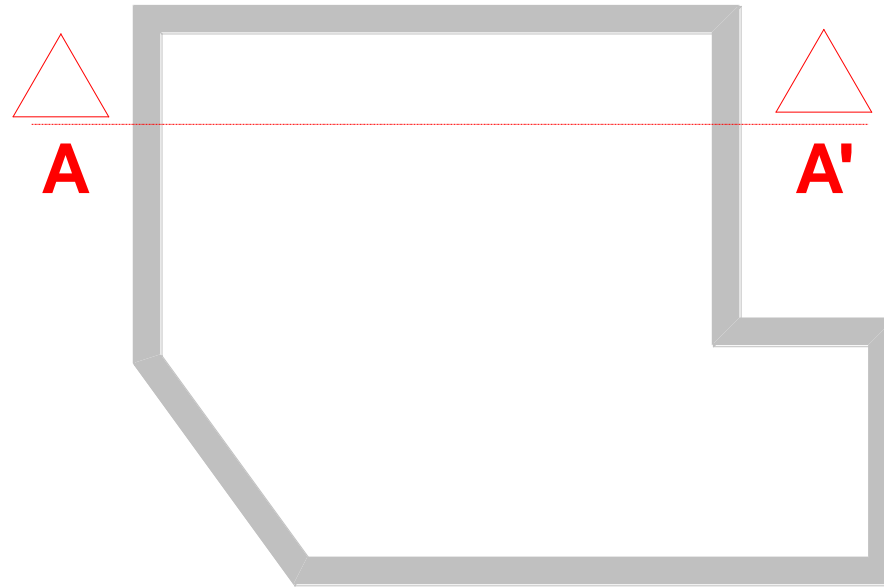
Planta baixa - Técnica



Indicação de cortes

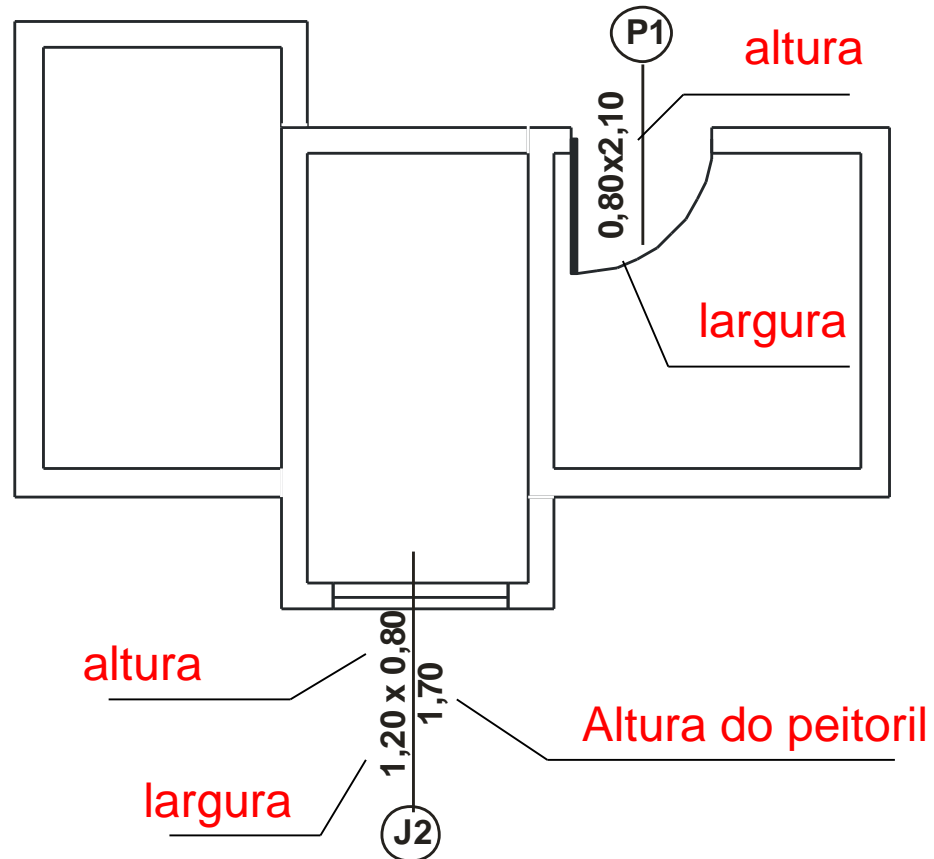


Indicação de cortes

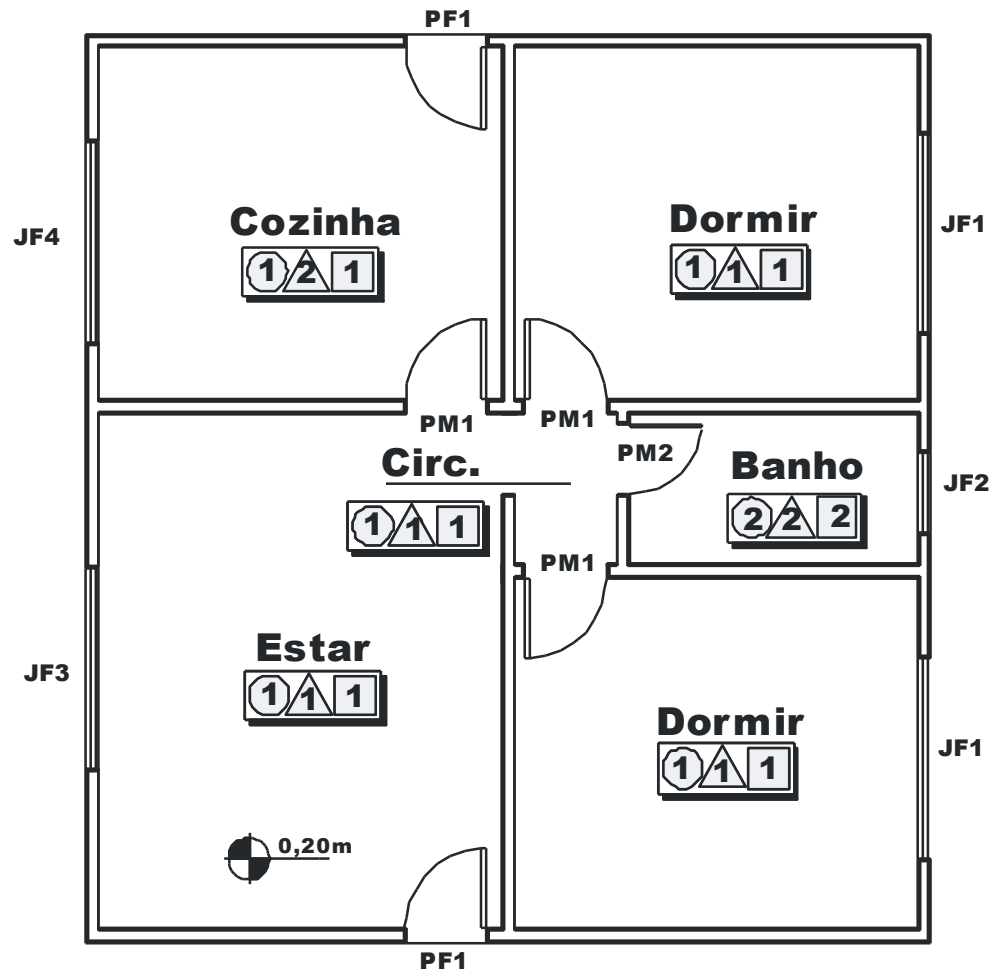


Planta baixa - Técnica

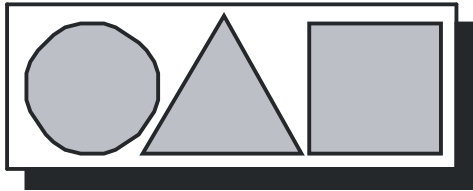
Indicação de cotas de portas e janelas



Planta baixa - Técnica



Legenda de Acabamento



Acabamento

○ Pisos

01	Cerâmico - 40X40 - Ref. 3.220
02	Cerâmico - 20X30 - Ref. 2.220
03	
04	

△ Revestimentos

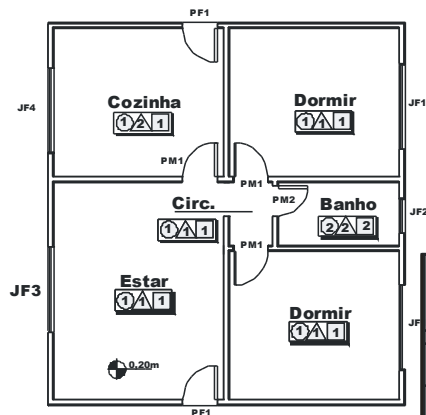
01
02
03
04

□ Forros

01
02
03
04



Planta baixa - Técnica



Esquadrias - Janelas

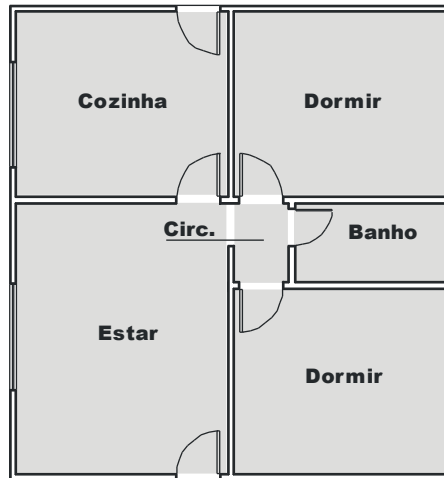
un	largura	altura	peitoril	quant.	tipo	descrição
JF1	2.00	1.00	1.00	2.00	correr	ferro/vidro - veneziana
JF2	1.00	0.80	1.70	1.00	máximo-ar	ferro/vidro
JF3	2.00	1.00	1.00	1.00	basculante	ferro/vidro
JF4	2.00	1.00	1.00	1.00	correr	ferro/vidro

Esquadrias - Portas

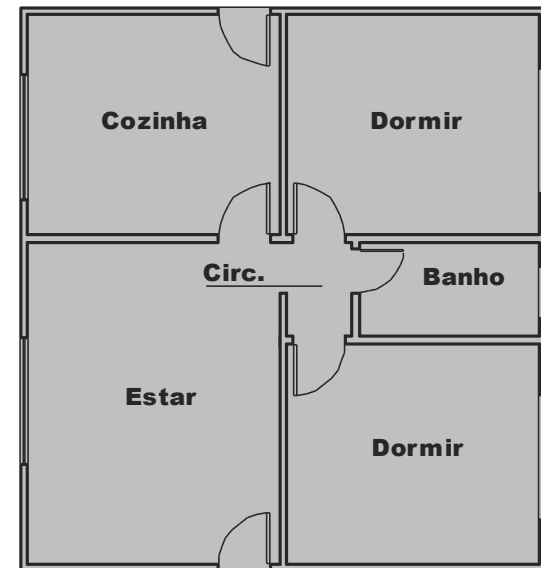
un	largura	altura	quant.	tipo	descrição
PM1	0.80	2.10	3.00	abrir	madeira
PM2	0.70	2.10	1.00	abrir	madeira
PF1	0.80	2.10	2.00	abrir	ferro/vidro



Planta baixa - Técnica



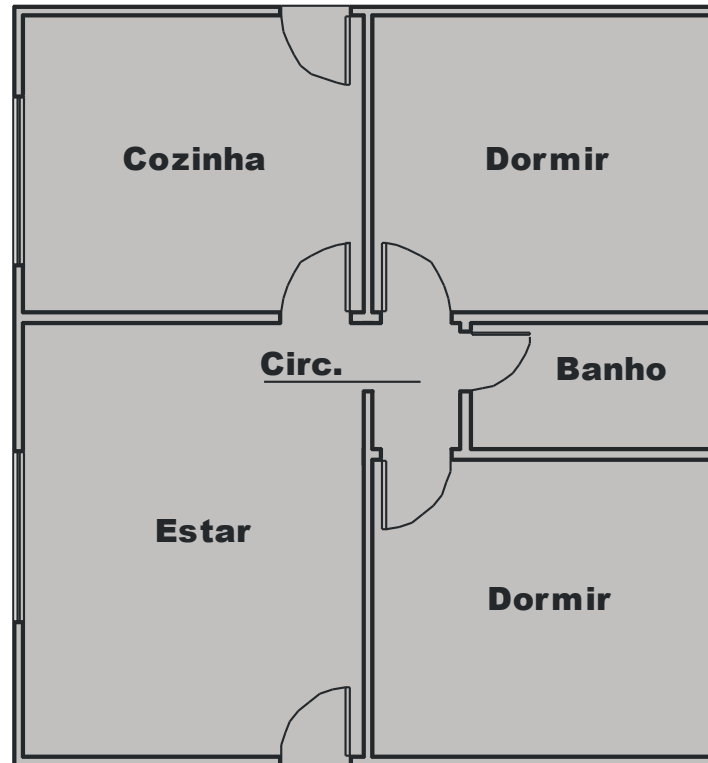
Área total



Área útil



Planta baixa - Técnica



Planta baixa – Técnica
Escala – 1 / 100



